

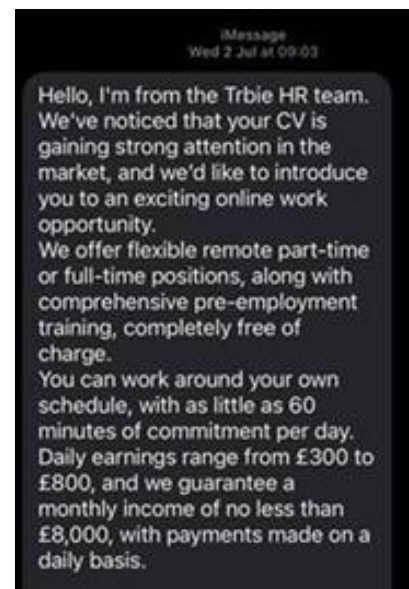
## Job Scam

Scammers are preying on job seekers with appealing, but too-good-to-be-true, offers. Fake job ads sent via text and WhatsApp claim to offer a lot of money to complete tasks in your own time. These scams are typically used by fraudsters to groom you into an elaborate scam.

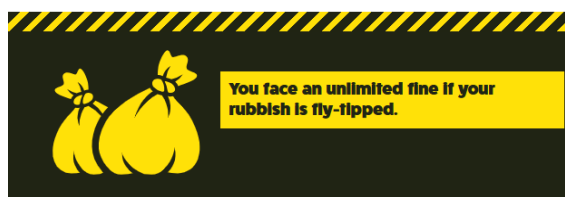
Recently, recruitment companies including Capital Recruitment, Tribe HR, Dalton Recruitment, Pinnacle Recruitment, Crossover Recruitment and Headstart Recruitment have been impersonated in scam texts asking you if you'd be interested in hearing about a job opportunity.

Remember - never reply to these messages, or send them your personal information or money.

Please report the scam by forwarding it to 7726 ([Report a scam text message - NCSC.GOV.UK](https://www.ncsc.gov.uk/report))



## Dispose of your waste responsibly to avoid a fine



Everyone has a legal 'duty of care' to ensure their household or business waste is disposed of correctly. You can be prosecuted even if your waste is fly tipped by someone you have paid to take it away.

To dispose of items not collected by your household refuse and recycling collections, you could:

- [Book an appointment at one of Hampshire County Council's waste recycling centres](#) and take your waste there.
- Pay an [approved licensed waste carrier](#) and sign a waste transfer note handing over responsibility to them.
- If you have something to dispose of, but you're not sure where will take it, check out Hampshire County Council's [waste finder](#).

## Neighbourhood Watch (NHW) ASB Guide

NHW have created an ASB guide as it is consistently shown to be the biggest concern of their members. Their guide explains how to recognise, record, and report ASB.

Find out more here: [Antisocial behaviour | Neighbourhood Watch Network](#)



## Campaign: “See beyond the silence”

Developed by Hampshire County Council, in partnership with the Hampshire Domestic Abuse Partnership and the Hampshire Authentic Voice Panel, this campaign urges adults to pause, look closer, and act.

Children experiencing domestic abuse might:

- Seem anxious, withdrawn or unusually aggressive
- Become suddenly fearful or overly compliant
- Struggle with sleep or concentration
- Show signs of guilt or self-blame

These are often a child’s way of asking for help without saying a word. If something doesn’t feel right, trust your instincts. Your concern could be the first step toward safety for a child. Find out more [here](#).



## Ninja Sword Surrender Scheme



Handing in a weapon could save a life – including your own. Carrying weapons increases your risk of becoming a victim yourself and having one for protection isn’t a good reason to. Every day, young people are hurt by the weapons they carry for protection. From August 1<sup>st</sup> ninja swords will be banned and will join the list of deadly weapons that are illegal to own, buy, sell, manufacture or transport.

Don’t risk it – hand in your weapon now at one of our designated police stations. Find out more here: [Ninja Sword Surrender Scheme | Hampshire and Isle of Wight Constabulary](#)

## Rural Times summer edition

[This edition](#) highlights police team efforts from across the county and over the borders into neighbouring force areas to patrol and conduct proactive rural crime operations.

There is information on other topics such as fish poaching, hare coursing, ground nesting birds, and recent arrests, charges and convictions for rural criminals operating in our area.



## Travelling abroad? Protect your bank card



Don’t let your dream holiday be ruined by criminals. Before you go overseas, make sure:

- Your card company has your up-to-date contact details.
- You have your card company’s 24-hour telephone number with you in case you need to contact them.
- You only take cards you intend to use, leave the others securely at home.

When you’re back, check your bank statement for any transactions you don’t recognise.